



45 St. Lukes Crescent
Bristol,

Boardwalk





St Lukes Crescent

VICTORIA PARK

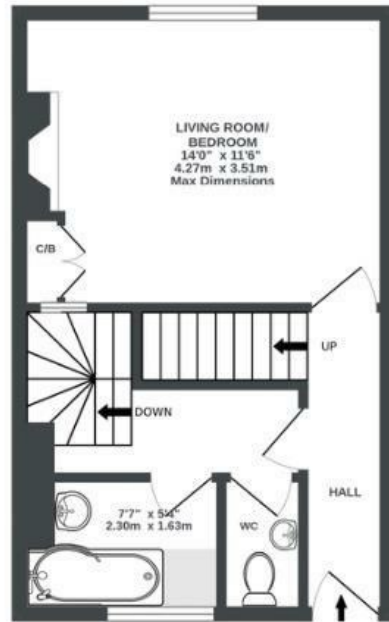
APPROXIMATE FLOOR AREA
114.8 SQM / 1235 SQFT



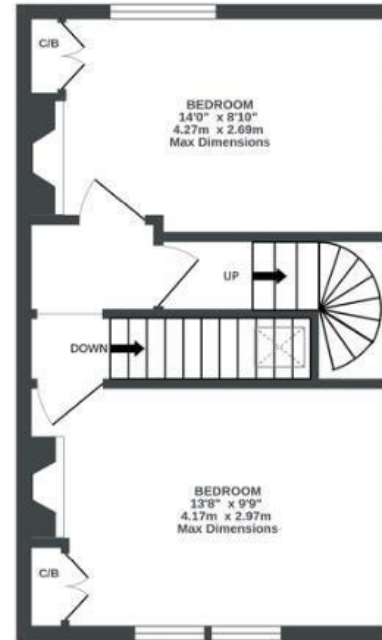
LOWER GROUND FLOOR
309 sq.ft. (28.7 sq.m.) approx.



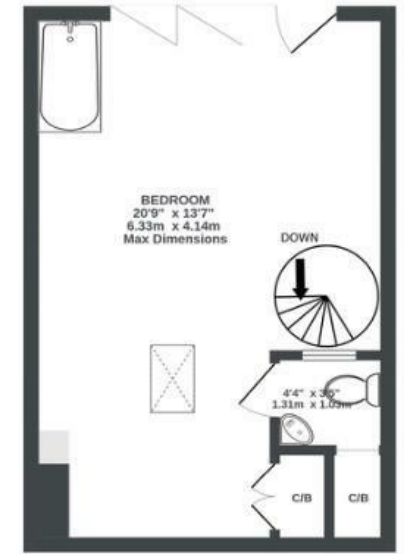
GROUND FLOOR
318 sq.ft. (29.5 sq.m.) approx.



1ST FLOOR
330 sq.ft. (30.6 sq.m.) approx.



2ND FLOOR
279 sq.ft. (25.9 sq.m.) approx.



Illustrations are for reference purposes only, measurements are approximate, not to scale.